

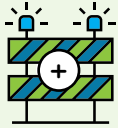


Overview

The Glenn Highway Arctic Avenue to Palmer-Fishhook Road project is focused on safety and capacity improvements to the roadway section where the Glenn Highway leaves downtown Palmer and ascends the Matanuska River bluffs.

From farmland, personal driveways, and neighborhood entrances that line the corridor, people are entering a section of highway that sees 10,000 vehicles per day traveling at speeds more than 45–55 mph. With these traffic patterns at the forefront and the Glenn Highway being part of the National Highway System, the project is focused on improving safety for all users. Roadway capacity evaluation is also planned to meet community needs now and into the future.

Goals



Improve Glenn Highway safety while planning for current and future travel needs.

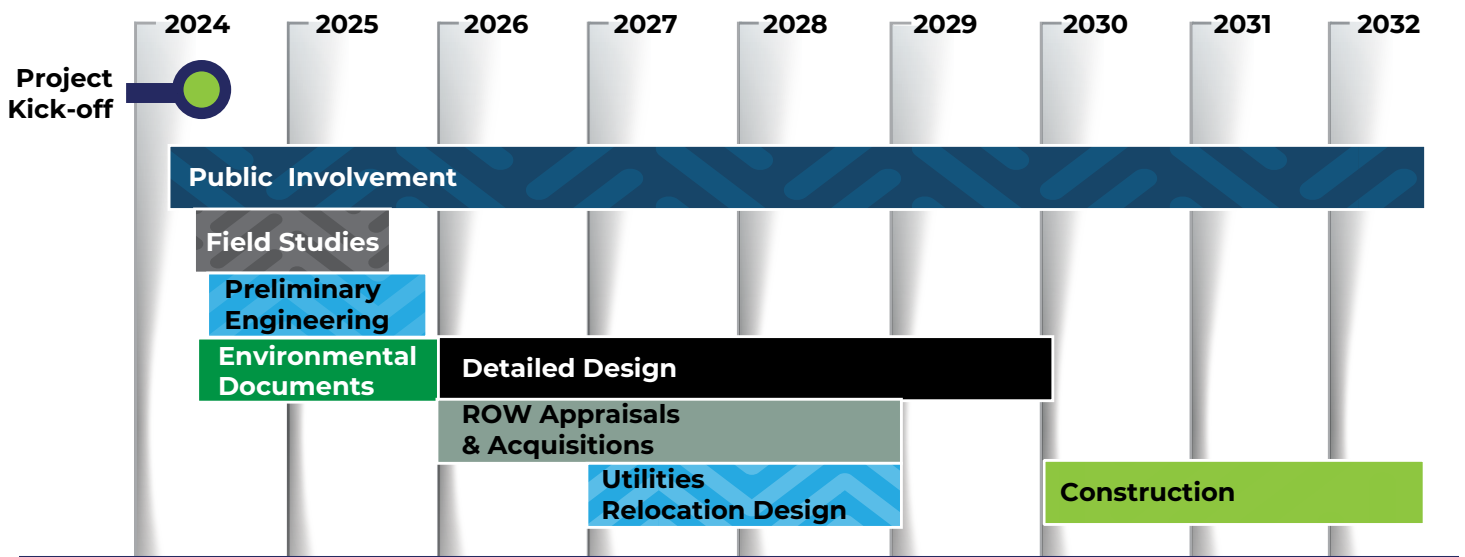


Enhance pedestrian access and accommodations.

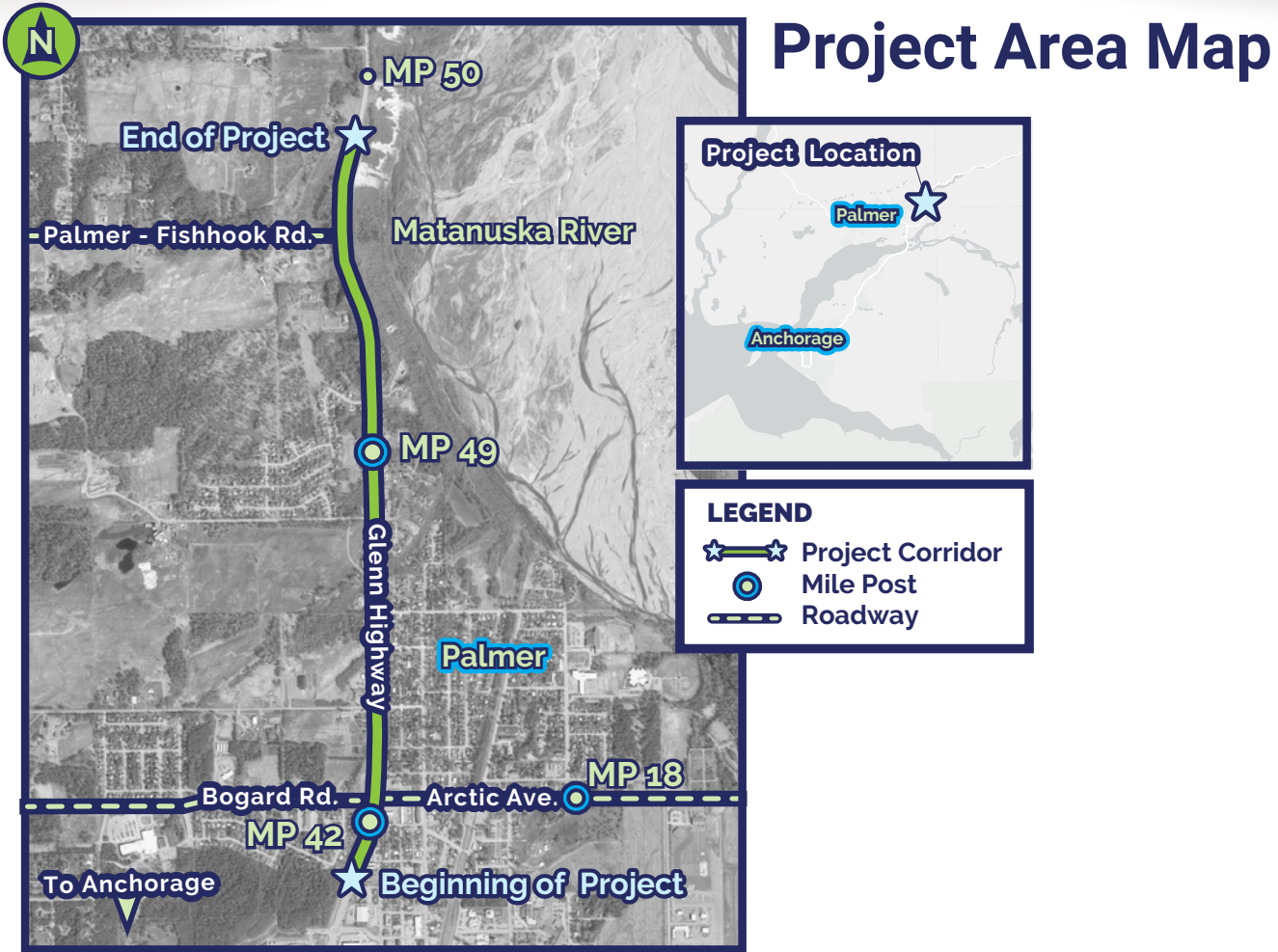


Offer clear, consistent, and mindful communication and engagement with stakeholders.

Timeline



*Dates are subject to change.



Connect With Us



Website:
GlennArctic2PalmerFishhook.com



Email:
info@GlennArctic2PalmerFishhook.com



Hotline:
(907) 268-3015



Join our Mailing List:
<http://eepurl.com/iO8Px->

Scan me with your smart phone!



For more information, contact:

Chris Bentz, P.E.
DOT&PF, Project Manager
(907) 268-3015
info@GlennArctic2PalmerFishhook.com

Amy Burnett
HDR, Public Involvement Lead
(907) 268-3015
info@GlennArctic2PalmerFishhook.com

It is the policy of the Alaska Department of Transportation and Public Facilities (DOT&PF) that no one shall be subject to discrimination on the basis of race, color, national origin, sex, age, or disability. Persons who believe they may have experienced discrimination in the delivery of these federally assisted programs or activities may file a complaint with: Alaska DOT&PF Civil Rights Office 2200 East 42nd Avenue, Room 310 Anchorage, AK 99508 Phone: 907-269-0851 Alaska Relay 7-1-1 or 1 (800) 676-3777 Fax: 907-269-0847.